



01

01 FIT FOR THE TASK

Designed by Peter Stathis for San Francisco-based lighting manufacturer, Pablo, Linklight is a simpler, modernised version of the pantograph task lamp. Consisting of a conductive aluminium skin, which delivers power minus internal wiring, Linklight has 18 high-power LEDs and advanced solid-state chip-on-board technology. Its minimal component parts means it can be recycled or the parts reused. Available in black, white, grey, yellow, green and red. www.kodalighting.com.au

OBJECTS

BRINGING YOU THE LATEST IN CUTTING-EDGE STYLE AND STAND-OUT PIECES.



02

02 SHORT AND SWEET Taiko, meaning 'drum' in Japanese, is designed by Tomoko Mizu and manufactured by Vittorio Bonacina. The rattan-weave form is tinted using natural, non-toxic water-based products, in natural, stained or lacquered colours. www.dedece.com

03 OUT OF AFRICA The Maun Windsor chair by Patty Johnson is a result of the African North South Project, a collaborative design initiative. The Maun's handcrafted wood is from well-managed forests and the chair has an all-natural soap-flake finish. www.mabeofurniture.com



03

04 GARDEN OF LIGHT

Inspired by the decorative plaster ceiling of his former home, Marcel Wanders has created Skygarden for Flos. With a minimalist shell, the light-fitting's interior consists of traditional detailing, such as leaves, flowers and branches, while the lightbulb cover has a laser-cut pattern featuring one of Wanders' design patterns. The shell is available in black, white, gold and brown. www.euroluce.com.au

05 CONVERSATION PIECES

Created by English-born potter and ceramicist Deb Taylor, Worded Cups are made from Limoges and Australian porcelain. Glazed on the inside, the cups are food-safe and available in pre-worded form or you can customise the words to create a bespoke collection. Courtesy of the Artist 02 9380 9499

06 MAN MADE

Herringbone Stripe fabric is a collaboration between New York-based textile manufacturers Maharam and British fashion designer Paul Smith. A densely constructed 100% wool herringbone, the fabric features strips of vivid sateen, each placed in random proximity to the next. www.kvadratmaharam.com

07 THE RIGHT RUG

Designer Rugs has collaborated with bernabeifreeman to create its first hand-knotted designer range. The bernabeifreeman rug collection features six hand-knotted rugs: Appliqué, Folk, Lace-Like, Brodie, Mosaic and Bias (pictured). Each can be custom coloured or sized. www.designerrugs.com.au



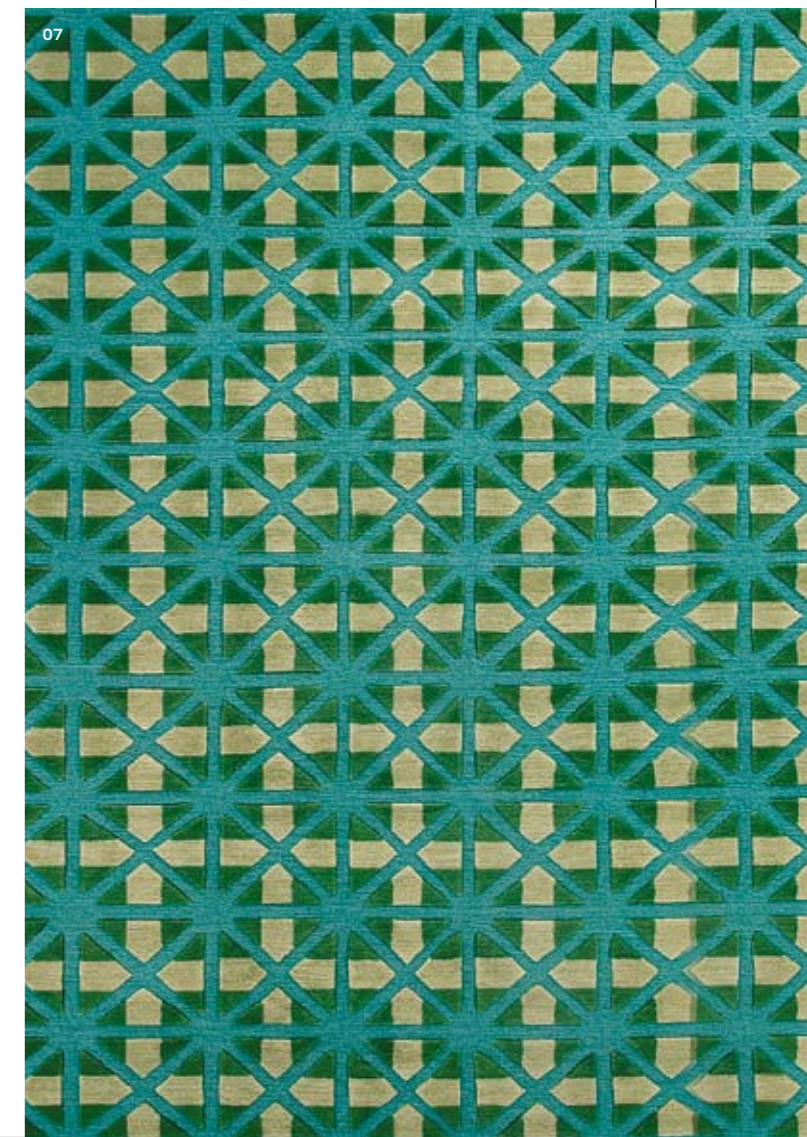
04



05



06



07

TEXT/NICOLE THOMAS